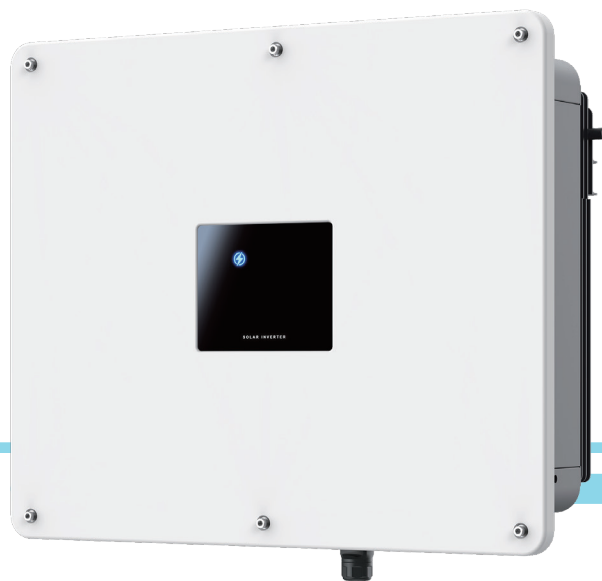


THREE PHASE & MULTIPLE MPPT

SE 30/40KTL-T3/G2, SE 50KTL-Q3/G2

Application: Commercial & Industrial Sites

**SUPERIOR PERFORMANCE**

- Maximum efficiency of 98.5%
- Large string current, compatible with large PV modules
- 30KW with natural cooling design

**HIGH RELIABILITY**

- IP66 protection level for outdoor installation
- DC/AC Type II SPD
- Optional: AFCI, Night SVG, I/V detection, and integrated PID

**INTELLIGENT MAINTENANCE**

- Power consumption monitoring
- Remote configuration and upgrade
- Quick commissioning via mobile app
- String level current detection



www.senergytec.com

Shenzhen Senergy Technology Co., Ltd.

Tel: +86-755-8524-5541 ext. 2800

Email: salesglobal@senergytec.com

Address: 11th floor, Building 6, Skyworth Innovation Valley, No. 8 Tangtou No. 1 Road, Bao'an District, Shenzhen, P.R.China

Model	SE 30KTL-T3/G2	SE 40KTL-T3/G2	SE 50KTL-Q3/G2
Efficiency			
Max. Efficiency		98.5%	
European Efficiency	98.0%	98.0%	97.9%
Input (PV)			
Max. Input Voltage		1100V	
Max. PV Configuration (STC)		150%	
Rated Input Voltage		620V	
Max. Input Current	40A+2*32A	40A+2*32A	40A+3*32A
Max.Short Circuit Current	50A+2*45A	50A+2*45A	50A+3*45A
Start Input Voltage		200V	
MPPT Operating Voltage Range		180V-1000V	
Max. Number of PV Strings	2/2/2	2/2/2	2/2/2/2
No. of MPPTs	3	3	4
Output (Grid)			
Rated AC Active Power	30,000W	40,000W	50,000W
Max. AC Apparent Power	33,400VA	44,500VA	55,600VA
Max. AC Output Current	51A	67.5A	84.3A
Rated AC Voltage		380V/400V/415V, 3W+N+PE or 3W+PE	
AC Voltage Range ^①		320V-520V (Adjustable)	
Rated Grid Frequency		50Hz / 60Hz	
Grid Frequency Range ^②		45-55Hz / 55-65Hz (Adjustable)	
THDI		<3% (Rated Power)	
DC Current Injection		<0.5%In	
Power Factor		> 0.99 Rated power (Adjustable 0.8 LD - 0.8LG)	
Protection			
DC Switch		Yes	
Anti-Islanding Protection		Yes	
AC Overcurrent Protection		Yes	
AC Short Circuit Protection		Yes	
DC Reverse Protection		Yes	
Surge Arrester		DC Type II / AC Type II	
Insulation Detection		Yes	
Leakage Current Protection		Yes	
PV String Monitoring		Optional	
Consumption Monitoring		Optional	
General			
Topology		Transformerless	
IP Rating		IP66	
Night Self Consumption		<1W (Standard)	
Cooling	Natural cooling		Fan cooling
Operating Temperature Range		-25°C-60°C	
Relative Humidity Range		0-100%	
Max. Operating Altitude		4000m	
Dimensions (W*H*D)		635mm*530mm*224mm	
Weight	36Kg	40Kg	42Kg
HMI & COM			
Display		Wireless & APP+LED, LCD (Optional)	
Communication		RS485, Optional: WiFi / GPRS / LAN	
Certification			
Safety		IEC62109-1, IEC62109-2	
Grid Code	VDE-AR-N 4105, EN 50549-1, CEI 0-21, UNE 206006/206007-1, RD 1699/661&413, IEC 61727/62116, AS4777.2		
Warranty		5 Years	

- Remarks:**
- ^{①②}The range of output voltage and frequency may vary depending on different grid codes.
 - Specifications are subject to change without advanced notice.